

# Washington, D.C. FirstNet Case Study: Both a Critical First Responder and a Service Provider

Andrew Afflerbach, Ph.D., P.E.  
CEO and Director of Engineering  
CTC Technology & Energy

FirstNet and Public Safety Wireless Broadband Panel  
NATOA Annual Conference | September 18, 2013

# Case Study Outline

---

- ▶ Impetus for public safety broadband in the National Capital Region
- ▶ FirstNet vision – Washington, D.C. as first responder ***and*** service provider
- ▶ Envisioned planning process
- ▶ Lessons learned



# Local Role in FirstNet

---

- ▶ FirstNet envisioned by Congress as single national network
- ▶ Hardened, public safety grade, interoperable
- ▶ State, local, and tribal input in planning
  - ▶ State and Local Implementation Grant Program, SLIGP
- ▶ Local control in incidents and day-to-day
- ▶ Limited funding requires public-private partnership



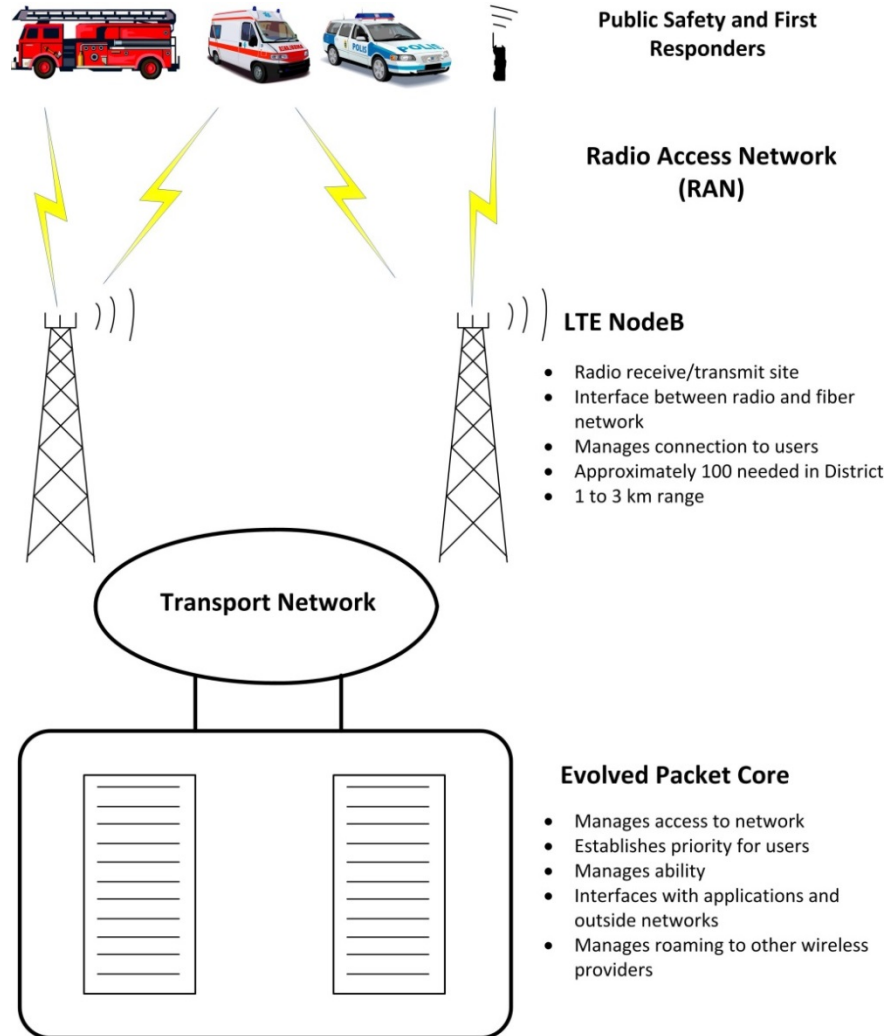
# Local Role in FirstNet

---

- ▶ Localities can assert needs in state planning process and through other avenues
  - ▶ Functional requirements
  - ▶ Ability to afford
  - ▶ Local control
  - ▶ Available assets
    - ▶ Towers
    - ▶ Fiber
    - ▶ Agreements/coordination
    - ▶ Expertise



# FirstNet/LTE Architecture



# Impetus for Public Safety Broadband in D.C./National Capital Region

---

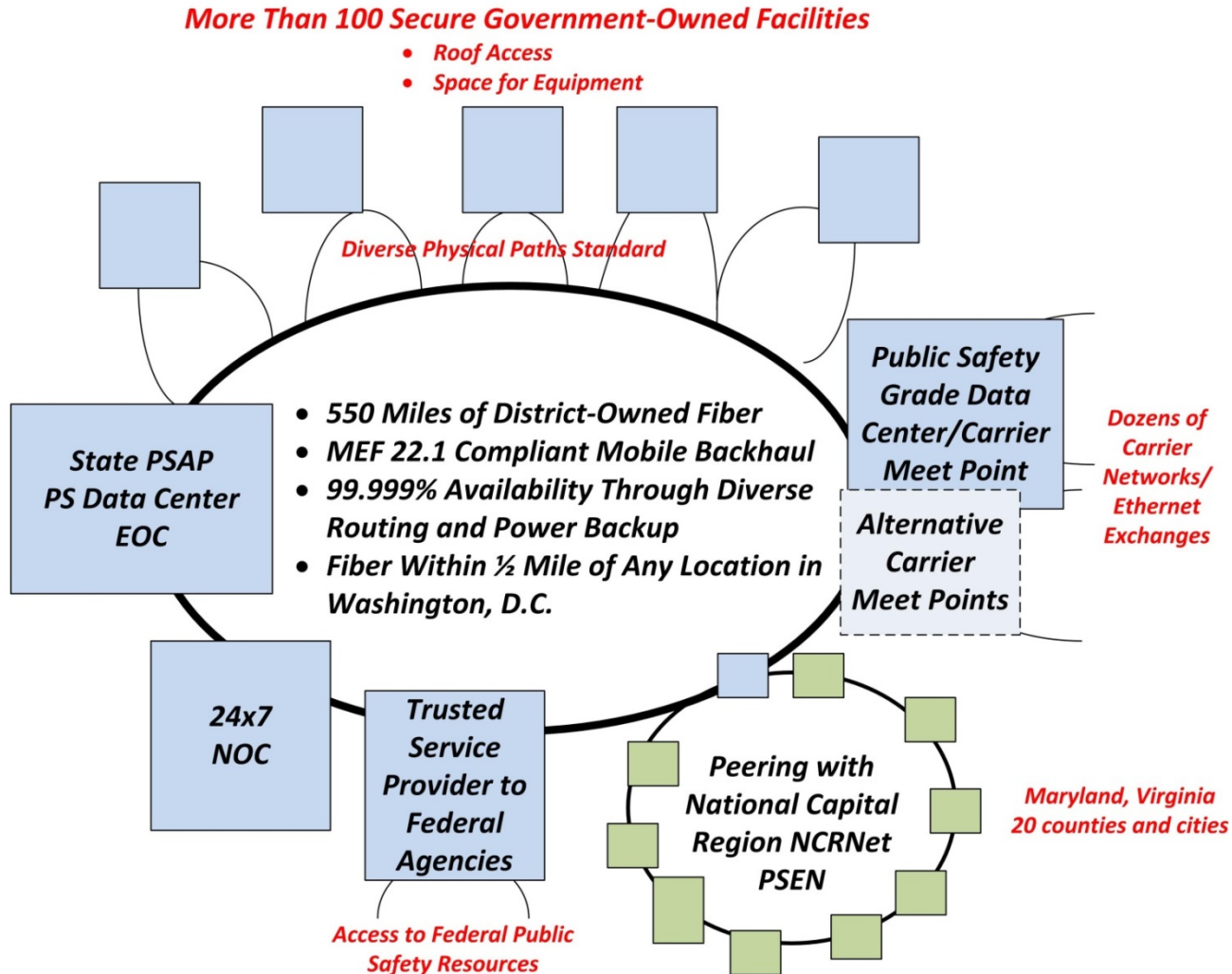
- ▶ **High-profile and risk** – 9/11, 2002 sniper attacks, Navy Yard, large-scale events, severe storms
- ▶ **Demonstrated limitations of public network**
- ▶ **Demonstrated capabilities** of city technology and first responder teams in last decade
- ▶ **Significant work** last decade on wireless broadband
  - ▶ District (DC-Net) and regional (NCRnet) fiber networks
  - ▶ Regional public safety applications
  - ▶ District (WARN) and regional (RWBN) wireless broadband networks under spectrum waiver in 700 MHz Band 14
  - ▶ Regional governance

# D.C. Approaches FirstNet as First Responder and Service Provider

---

- ▶ Diverse, secure data centers
  - ▶ Hosting LTE core
  - ▶ Hosting public safety applications
- ▶ Ubiquitous fiber backhaul connectivity
  - ▶ Connections between core/RAN/centers/24x7 NOC
  - ▶ Peering with public networks/region/states/federal
  - ▶ Capacity available
  - ▶ High performance and low latency
- ▶ Radio towers/site locations
- ▶ LTE/mobile broadband expertise
- ▶ Procurement through intergovernmental agreement

# D.C. Approaches FirstNet as First Responder and Service Provider





# D.C. Approaches FirstNet as Customer and Service Provider

---

- ▶ Participation in NTIA State and Local Planning Process (SLIGP)
- ▶ Participation in FirstNet RFI process



# D.C. Participation in NTIA SLIGP

---

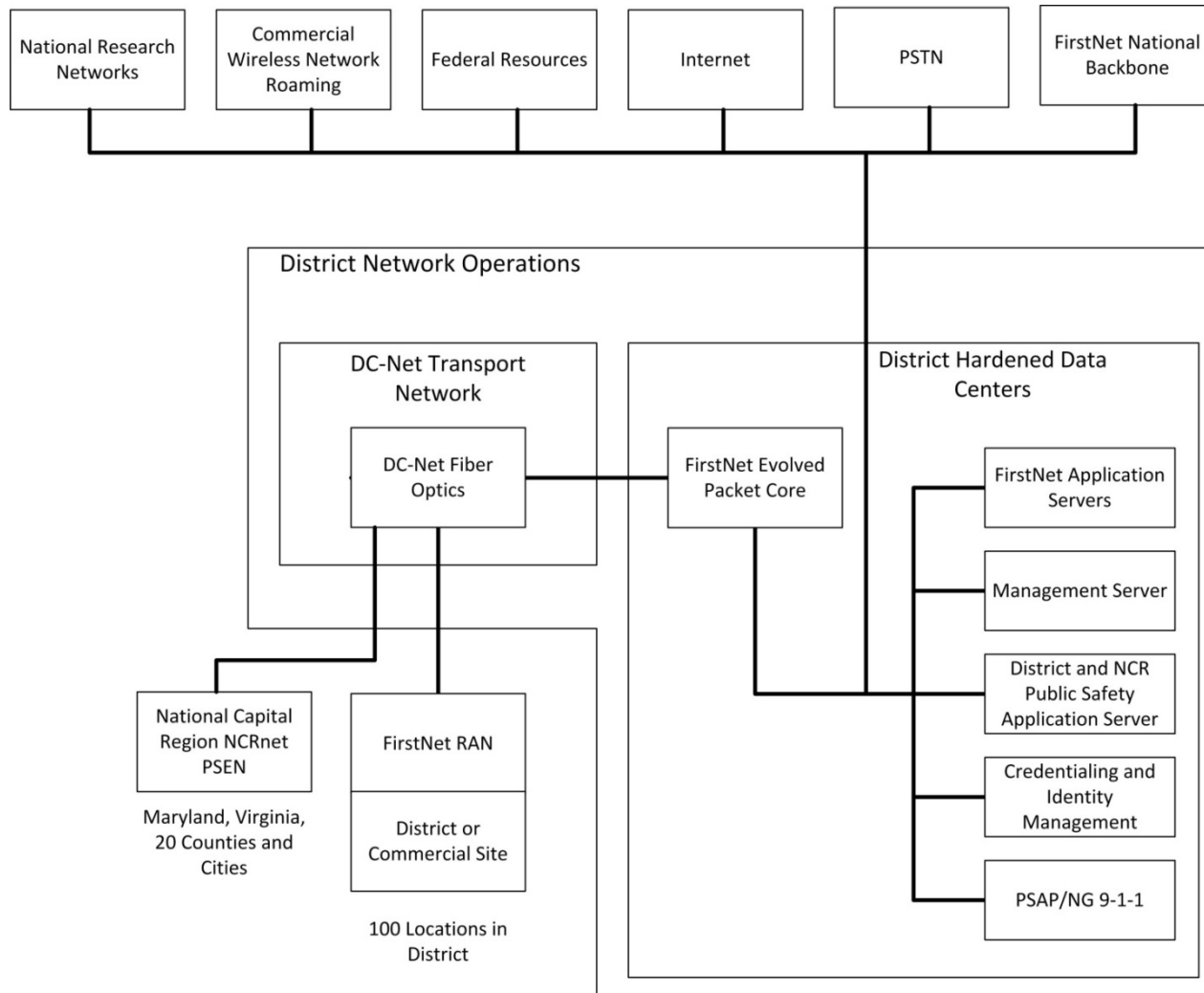
- ▶ Over next three years:
  - ▶ D.C. considered a state
  - ▶ Consultation with FirstNet
  - ▶ Internal information/education – D.C. and dozens of first responder agencies
  - ▶ Requirements gathering
  - ▶ Coordination with region and non-D.C. first responders
  - ▶ Inventory local assets
  - ▶ Memorandum of agreement
  - ▶ Comprehensive plan

## D.C. Participation in RFI Process

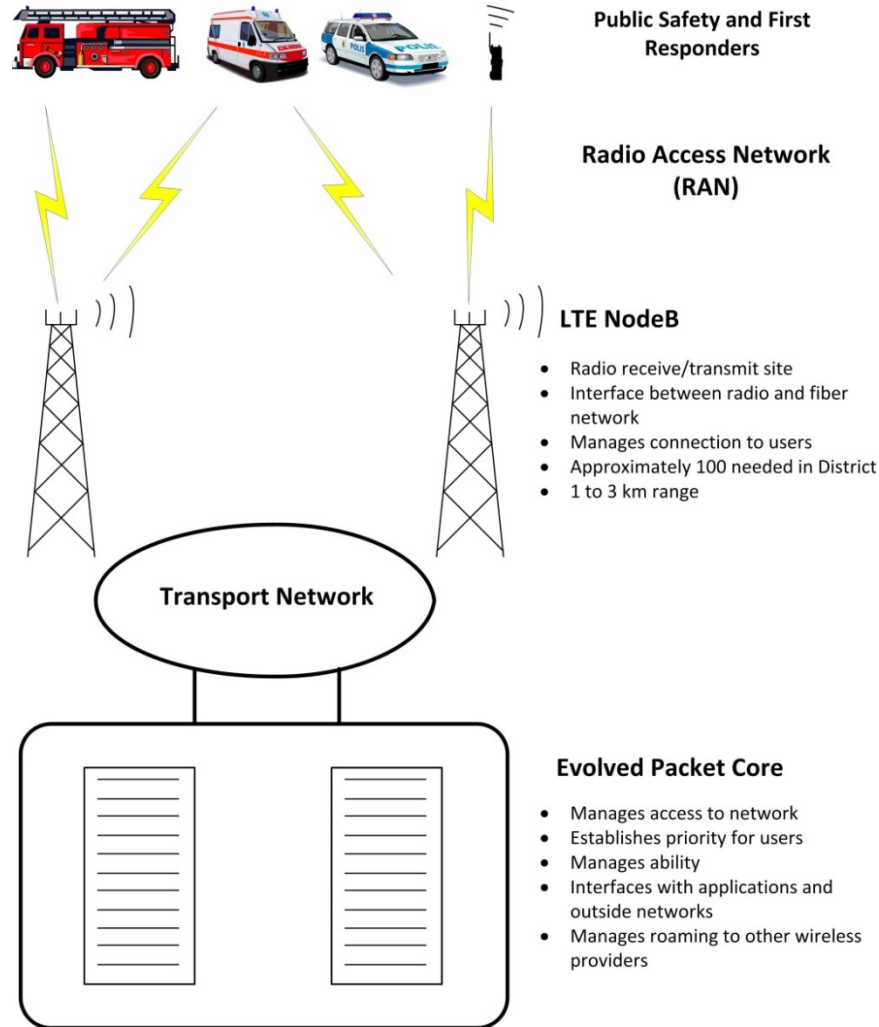
---

- ▶ FirstNet approach to gathering information from manufacturers and service providers
- ▶ 17 RFIs since last May
- ▶ Information reviewed by FirstNet staff and advisory committees
- ▶ D.C. responded to Transport, Data Center, and Network Service Platforms (Identity Management)

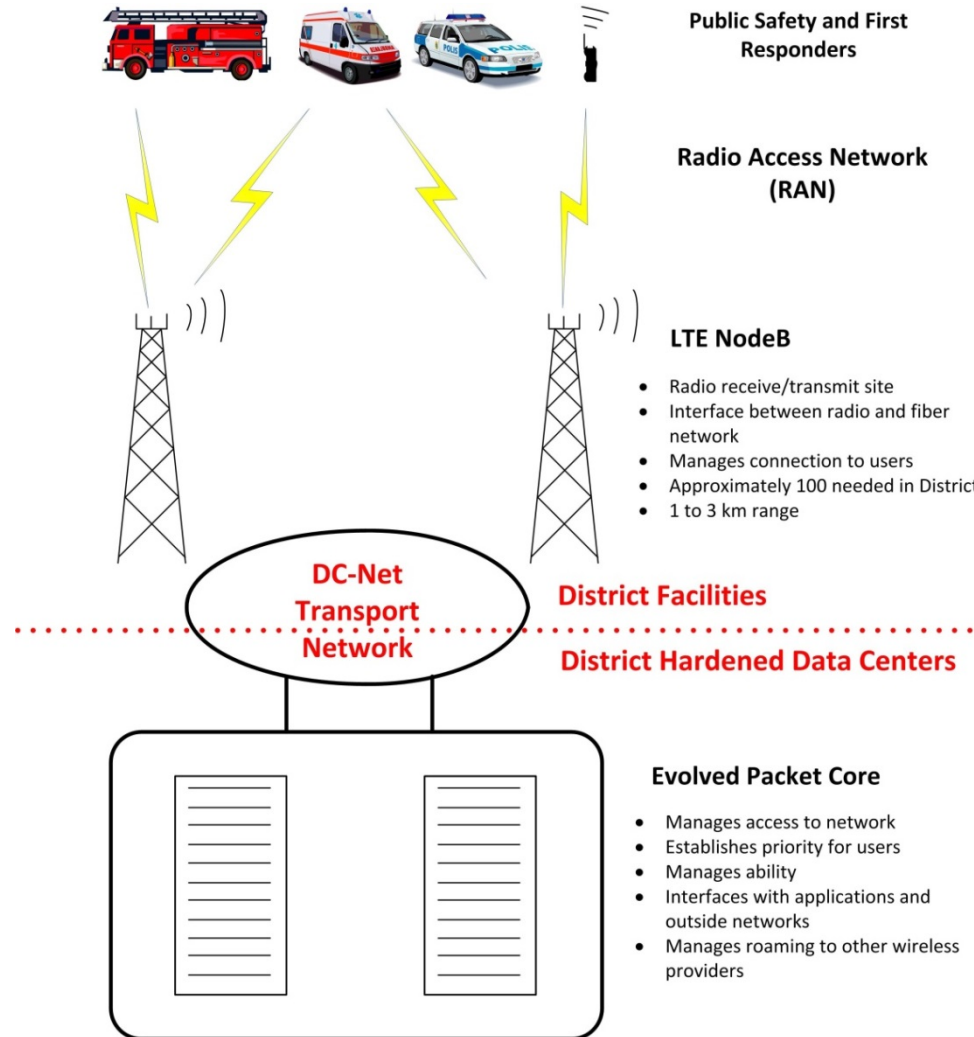
# Recommended FirstNet Architecture in D.C.



# Recommended FirstNet Architecture in D.C.



# Recommended FirstNet Architecture in D.C.



# Lessons Learned

---

- ▶ High value of local government assets
  - ▶ Hardening
  - ▶ Available capacity
  - ▶ Cost effective
- ▶ Value in a provider–customer model for government services
  - ▶ D.C. has fast track procurement vehicle
  - ▶ D.C. has catalog and pricing for services
  - ▶ D.C. has service level agreements and contracts
- ▶ Early stages – flexibility and patience